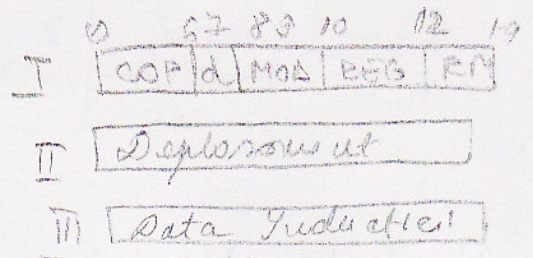
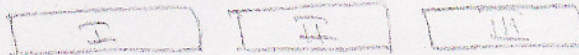
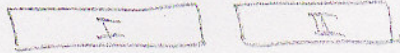


## Formatul instrucțiunilor

- variabile



```
MOV RB, RA
```

```
MOV R; Adr
```

```
MOV R; 32461
```

- II - displacement // data
- d - directie => destinatie
- MOD = mod de adresare

- Adr directă

```
MOV RA, adr
```

- adr indirectă

```
MOV RA, [adrusă]
```

- adr indirectă prin reg

```
MOV RA, [RA]
```

AE =  $\begin{matrix} XA \\ XB \\ BA \\ BB \end{matrix}$

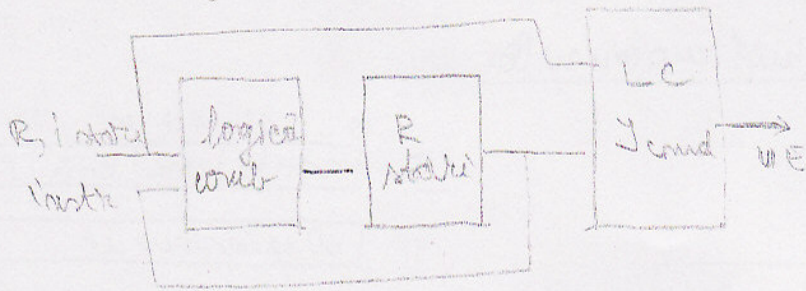
- adr indirectă prin suma registrelor

```
MOV RA, [BA] [XA]
```

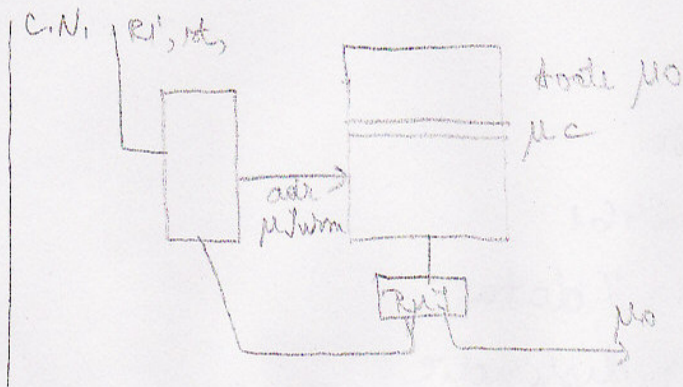
```
MOV RA, [BA + XA]
```

$$R_i = \begin{cases} 0 & \text{cu AE} \\ 1 & \text{fără AE} \end{cases}$$

60 - Rekayasa 12



Juste Masud



*[Large handwritten scribbles and signatures]*